

CONTROLS (SWITCHES)

EMPH-STAGES (1-4)

Decide which stage you want to feedback the phase shifted signal. Different stages yield different sounds. Combining switches will bring you total oscillation and crazy weirdness.

WARNING: Some combinations have a huge boost in output level. Best to dial it back and then adjust it to your needs afterwards.

SWP (SWEEP)

Choose between two modes for the phase sweep: either LFO-controlled (LFO) or dynamically controlled by your attack and the resulting envelope (ENV). Change the SPURTCONTROL to either LFO or ENV for the full envelope-controlled sweep range.

ENV (ENVELOPE)

Defines the envelope direction: either upwards (UP) or downwards (DWN) going.

SPURTCONTROL

Sets the method to control the LFO Spurt-rate. Either dynamically by the envelope itself (e.g. harder picking means slower/faster rate), the pure LFO or combining the envelope control and the SPURT knob. Combining both controls, SPURT sets the minimum speed.

STEREOPAN

Activates/deactivates the LFO synchronized stereo output panning. Set back the MIX for a panning tremolo. Activate the stereo panning mode while using OUT 1 jack turns the HORIZONT into a phasing tremolo.

EXP MODE

Choose between controlling the speed of the phasing (left) or sweep manually (right) for a resonant and wah-like sound. The middle position deactivates the EXP-MODE.

SAFETY INSTRUCTIONS

This device is intended to be used for sound processing of signals from musical instruments. Any other use or use under other operating conditions is considered to be improper and may result in personal injury or property damage. No liability will be assumed for damages resulting from improper use.

OPERATING CONDITIONS

This device has been designed for indoor use only. To prevent damage, never expose the device to any liquid or moisture. Avoid direct sunlight, heavy dirt and strong vibrations.

EXTERNAL POWER SUPPLY

Use only with 9V power supply. Failure to do so could result in damage to the device and possibly the user. Unplug the external power supply before electrical storms occur and when the device is unused for long periods of time to reduce the risk of electric shock or fire.

WARRANTY

We offer a 5-year warranty. The warranty expires immediately if the product is changed, operated incorrectly, intentionally or negligently damaged, or if it is damaged by force majeure or use beyond the permitted operating conditions.

KMA AUDIO MACHINES GUITAR AND BASS EFFECT PEDALS

Handmade in Berlin with love since 2013



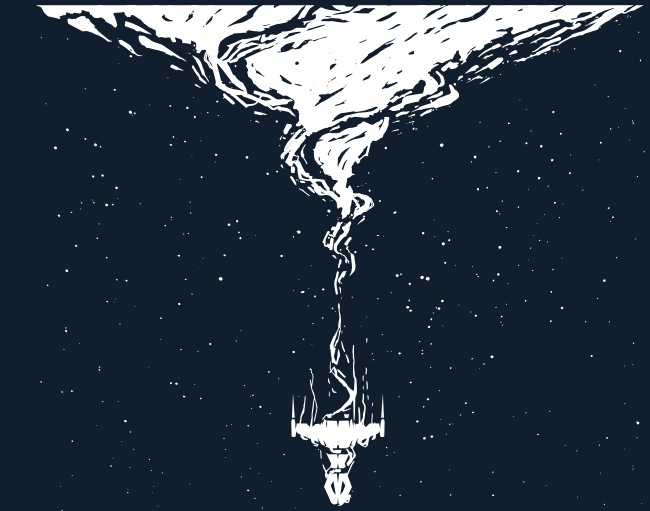
MORE PEDALS AND INFORMATION

www.kma-machines.com



HORIZONT

INTERDIMENSIONAL MULTISPATIAL JFET PHASER



INSTRUCTION MANUAL+ WARRANTY

HORIZONT – INTERDIMENSIONAL MULTISPATIAL JFET PHASER

Jump into spaceship HORIZONT and begin your trek into star-filled galaxies, all while discovering the incredible vastness of the sounds created by this interdimensional multi-spatial stereo JFET Phaser. The unexpected is waiting for you behind the far away horizon and it will be a journey you'll never forget!

The HORIZONT's mission is to push way beyond the classic phasing sounds of yesteryear, and take you to uncharted phaser worlds the second you plug in. By combining lush analog JFET phasing with digitally controlled dynamics, HORIZONT creates a vivid and expressive modulation experience, all while providing experimental and creative features that'll kick phasing well into the 21st century.

Besides the more common phaser controls, the HORIZONT offers a plethora of new and exciting options for all the interstellar tone chasers out there. To greatly broaden the range of phasing tones available, we implemented a digital LFO Controls: with no less than eight different waveforms: Ramp Up/Down, Sine/Triangle/Square wave, a sweeping waveform, Sample & Hold and a random slope waveform.

The implemented envelope generator is one of HORIZONT's absolute key features. It transforms your input signal into a control source to modulate the speed of the digitally controlled LFO or lets you manually phase for a resonant touch wah-like sound, depending on the state of the SWP- and SPURTCONTROL-Switch.



Set the SPURTCONTROL switch to LFO to let the SPURT knob adjust the internal phasing speed. However, by flicking the switch to ENV (Envelope) mode, it allows you to dynamically modulate the speed along the full LFO speed range, based on how loud the input source is. You can also combine the SPURT knob and the envelope by flicking the toggle to LFO+ENV where SPURT then sets the minimum speed. For more control, you can plug in an external expression pedal/CV-source (0-5V) to alter the minimum speed on-the-fly or you can use the TAP TEMPO switch to set the speed to fit in with the tempo of your music.

The EXP-Mode switch also lets you choose between a manual phasing mode, controlled by an expression-pedal or an external CV source. Setting the EXP-Mode switch to the middle position will disable any external expression control. The SWP (Sweep) switch lets you decide to use either the LFO or the envelope of your instrument signal to control the phasing. The envelope can be set to upwards or downwards operation via the ENV switch, seeing the LFO either slowing down or speeding up, or flipping the orientation when phasing manually from lows to highs and vice versa. In conjunction with the FUEL (Sensitivity) and the DECAY controls, the envelope can be tailored perfectly to your needs.

We kept the EMPH (Emphasis) mode from our original ASTROSPURT Phaser. The four toggleswitches determine the stage in which the phase-shifted signal



is fed back into itself, while the REG (Regeneration) control sets the amount of feedback. Each of the different switch variations and each turn of the REG control will yield different new wild, fuzzy and noisy sounds as you travel deeper down this sonic wormhole. In order for you to levitate through spacetime, we've also added a stereo output to the HORIZONT. You can switch between a standard stereo output or a panning output, via the STEREO-PAN switch, that is synchronized with the LFO speed. But wait, there's more! Set the MIX control to fully clean and the HORIZONT is transformed into a Tremolo on-the-spot, with all the other aforementioned features. Last but by no means least, we equipped the HORIZONT with an FX-Loop right in front of the phase-shifting line. This enables you to add your own secret sonic weapons to this spaceship, to create your very own unique phasing sounds. We've also increased the pedal's headroom drastically by boosting the internal circuit voltage to 18 V, from the regular 9 V input.

But don't be fooled by all of these seemingly complex features, the HORIZONT is a super intuitive next generation phaser that'll see your tone take flight in seconds flat. Whether you are looking for traditional phasing sounds, experimental synthetic soundscapes or super dynamic sonic endeavors: the HORIZONT will have you covered to infinity and beyond.

CONTROLS

SIGNAL

Determines the overall level of the outgoing signal

MIX

Blend between phase-shifted (ccw) and clean signal (cw). 12 o'clock gives you that lush well known phasing sound

DEPTH

Sweep between low frequency, full spectrum or high frequency phasing

SPURT

Sets your phasing speed from 0.05 Hz (20 s) up to 2 Hz (40 ms)

REG (REGENERATION)

Controls the amount of feedback when in EMPH mode

FUEL (INTENSITY)

Sets the sensitivity of the envelope trigger from Low (ccw) to High (cw)

DECAY

Dial in your preferred envelope decay time from fast (40 ms) to very slow (6 s)

WAVEFORM

Full control of eight different waveforms: 1 Ramp Up | 2 Ramp Down | 3 Square Wave | 4 Triangle | 5 Sinus | 6 Sweep | 7 Random Steps | 8 Random Slopes

EMPH-MODE SWITCH

Activates a master feedback loop to generate new tones by using the REG (Regeneration) control